

# Toyota Powered Stacker Trucks

The BT Staxio Range



**TOYOTA**

# BT Staxio

The complete range of powered stacker trucks from Toyota Material Handling

## BT Staxio W-series

PEDESTRIAN-OPERATED STACKERS



Compact pedestrian stackers for easy use  
in congested areas or on-board vehicles

0.8 – 2.0 tonnes load capacities

Lift heights up to 6.0 m

## BT Staxio P-series

STACKERS WITH DRIVER PLATFORM



Compact and manoeuvrable stackers  
with choice of platforms for high-speed travel

1.2 – 2.0 tonnes load capacities

Lift heights up to 6.0 m

## BT Staxio S-series

STAND-IN STACKERS



Enclosed cab and sideways driving position  
for work in congested areas

1.35 – 1.6 tonnes load capacities

Lift heights up to 6.3 m

## BT Staxio R-series

RIDER-SEATED STACKERS

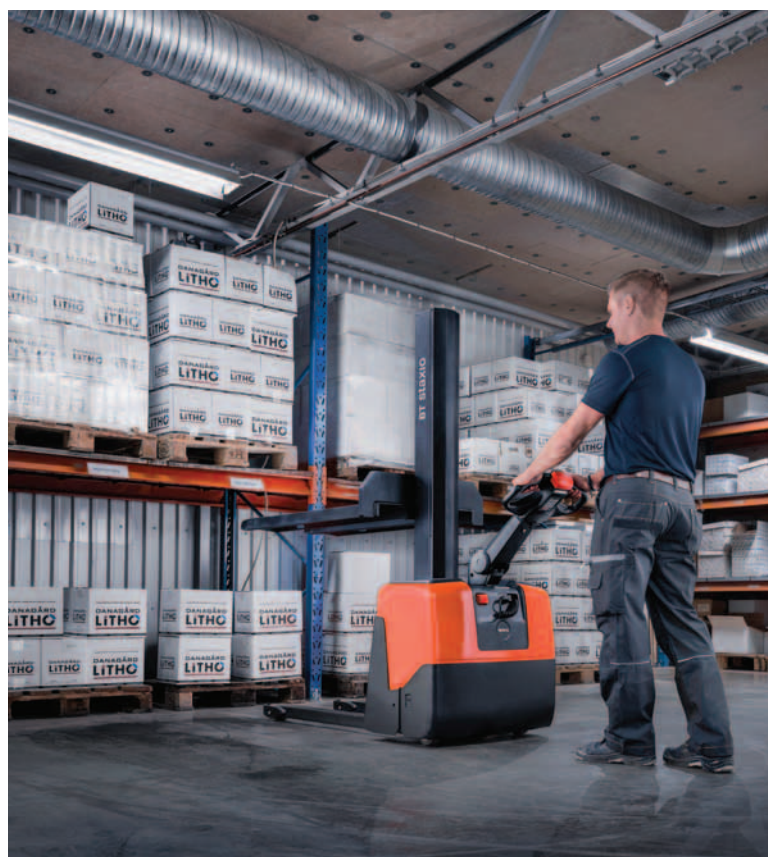
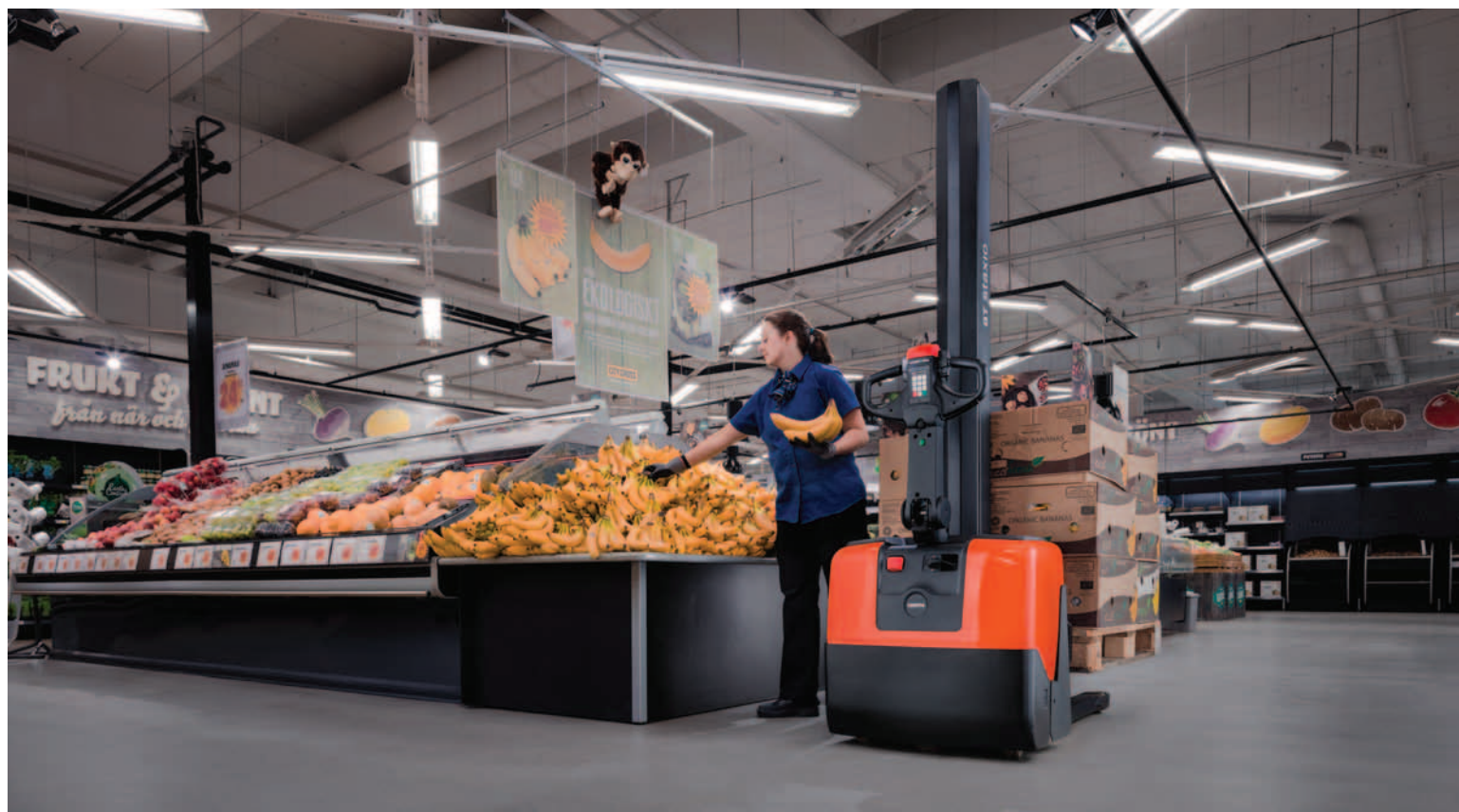


Designed and built for intensive  
stacking operations

1.35 – 1.6 tonnes load capacities

Lift heights up to 6.3 m





• standard • option

	Safety	Durability	Productivity	Driveability	BT Staxio HWE100	BT Staxio HWE100S
<b>Truck features</b>						
Adjustable fork width					•	•
Automatic height adjustment					•	•
Automatic parking brake					•	•
Bogie fork wheels						
BT Castorlink						
BT Powerdrive						
Choice of chassis widths						
Clear-view mast						
Clear-view overhead guard						
Double pallet handling						
Electronic braking system					•	•
Electronic regenerative brakes (motor)						
Electronic speed control					•	•
Elevating support arms						
High-capacity battery models						
Load support						
Powertrak traction system						
Spring-loaded castors with dampers					•	•
Spring-loaded drive wheel						
Straddle support arm version						•
Warning beacon						
Working lights						
<b>Controls and instruments</b>						
180° + steering					•	•
Electronic fingertip controls					•	•
Emergency collision button					•	•
Emergency cut-off					•	•
Hour meter					•	•
Parking brake					•	•
Tiller arm steering					•	•
<b>Operator features</b>						
Storage compartments					•	•
<b>Maintenance features</b>						
Easy access for maintenance					•	•
Fault diagnosis facility					•	•
Lubrication points					•	•
<b>Battery management features</b>						
Battery status indicator					•	•
Built-in charger					•	•

## BT Staxio W-series

PEDESTRIAN-OPERATED STACKER TRUCKS

BT Staxio HWE models are light enough to be used on mezzanine floors and are ideal for low-intensity use in environments such as shops and hospitals, especially with the low noise level generated by the truck.

### Revolutionary AC motor

The HWE model's revolutionary low-maintenance AC motor offers durability and strength, as well as low energy consumption.

### Driver comfort

For optimal driver comfort and intuitive handling, the HWE100 range has programmable driver parameters, as well as automatic height adjustment; an option that uses a photocell to monitor the height of the top of the load. As items are moved on and off, the fork height is automatically adjusted to a comfortable level for the operator.

### Safe operation with I\_Site

To ensure safe and efficient material handling, the BT Staxio W-series is designed to be compatible with the I\_Site truck management tool that monitors for example driver authorisation with a PIN code, machine utilisation and detects possible impacts of your truck in real time.

### Handling with care - just Click-2-Creep

Finite positioning is easy with these BT Staxio W-series trucks. The unique Click-2-Creep feature means that by simply double-clicking the control lever the truck is set to creep speed, allowing safe control in tight situations.

### 5-point chassis

BT Staxio W-series boasts a 5-point chassis that gives the truck excellent stability and control.

### TPS-based reliability

Like all Toyota trucks, BT Staxio trucks are built according to the Toyota Production System, assuring the highest levels of quality, durability and reliability.

- Built-in charger
- Easy access for efficient servicing, plus maintenance-free batteries
- HWE100S model can handle a variety of pallet sizes thanks to its adjustable straddle forks

Load capacity: 1.0 t @ 600 mm load centre

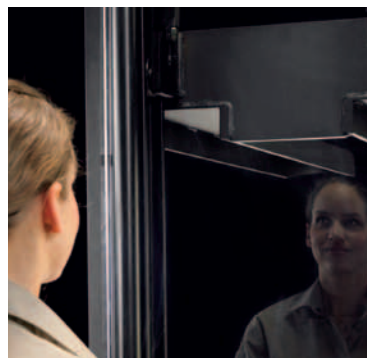
Maximum lift height: 2.0 m

Maximum battery capacity: 63 Ah

option available:

**I\_Site**







• standard • option

	Safety	Durability	Productivity	Driveability	BT Staxio SWE080L	BT Staxio SWE100	BT Staxio SWE120	BT Staxio SWE120L	BT Staxio SWE120S	BT Staxio SWE140	BT Staxio SWE140L	BT Staxio SWE200D	BT Staxio SWE140S	BT Staxio SWE145L	BT Staxio SWE160	BT Staxio SWE160L	BT Staxio SWE200	BT Staxio SWE200L	BT Staxio SWE120XR
<b>Truck features</b>																			
Reach mast with pantograph fork mechanism																			•
Adjustable fork width									•			•							•
Tilt function																			•
Sideshift function																		•	
Fork spreader function																		•	
Automatic height adjustment																			
Automatic parking brake					•	•	•	•	•	•	•	•	•	•	•	•	•	•	•
Bogie fork wheels					•	•	•	•	•	•	•	•	•	•	•	•	•	•	•
BT Castorlink					•														
Choice of chassis widths										•	•		•	•	•	•	•	•	•
Clear-view mast						•	•	•	•	•	•	•	•	•	•	•	•	•	•
Double pallet handling												•							
Electronic braking system					•	•	•	•	•	•	•	•	•	•	•	•	•	•	•
Electronic regenerative brakes (motor)					•	•	•	•	•	•	•	•	•	•	•	•	•	•	•
Electronic speed control					•	•	•	•	•	•	•	•	•	•	•	•	•	•	•
Elevating support arms					•		•			•	•			•		•			
High-capacity battery models							•	•	•	•	•	•	•	•	•	•	•	•	•
Thin 35mm forks																			•
Load support						•	•	•	•	•	•	•	•	•	•	•	•	•	•
Spring-loaded drive wheel					•	•	•			•	•	•	•	•	•	•	•	•	•
Straddle support arm version								•				•							
<b>Controls and instruments</b>																			
180°+ steering					•	•	•	•	•	•	•	•	•	•	•	•	•	•	•
208° steering					•	•	•	•				•							
Access Control (PIN codes)					•	•	•	•	•	•	•	•	•	•	•	•	•	•	•
Automatic deceleration					•	•	•	•	•	•	•	•	•	•	•	•	•	•	•
Click-2-Creep					•	•	•	•	•	•	•	•	•	•	•	•	•	•	•
Drive motor temperature warning					•	•	•	•	•	•	•	•	•	•	•	•	•	•	•
E-bar					•	•	•	•	•	•	•	•	•	•	•	•	•	•	•
Electronic controller temperature warning					•	•	•	•	•	•	•	•	•	•	•	•	•	•	•
Electronic fingertip controls					•	•	•	•	•	•	•	•	•	•	•	•	•	•	•
Emergency collision button					•	•	•	•	•	•	•	•	•	•	•	•	•	•	•
Emergency cut-off					•	•	•	•	•	•	•	•	•	•	•	•	•	•	•
Hour meter					•	•	•	•	•	•	•	•	•	•	•	•	•	•	•
On-board data terminal mount					•	•	•	•	•	•	•	•	•	•	•	•	•	•	•
Sensi-lift						•	•	•	•	•	•	•	•	•	•	•	•	•	•
Reduced speed when cornering (OTP)												•	•	•	•	•	•	•	•
Soft driving characteristics when stacking (OTP)												•	•	•	•	•	•	•	•
Temporary speed reduction (turtle button)					•	•	•	•	•	•	•	•	•	•	•	•	•	•	•
Smart Access (electronic card/fob)					•	•	•	•	•	•	•	•	•	•	•	•	•	•	•
<b>Operator features</b>																			
Driver-adapted programmable performance					•	•	•	•	•	•	•	•	•	•	•	•	•	•	•
Flip-down driver platform					•	•	•	•	•	•	•	•	•	•	•	•	•	•	•
Shrinkwrap holder					•	•	•	•	•	•	•	•	•	•	•	•	•	•	•
Storage compartments					•	•	•	•	•	•	•	•	•	•	•	•	•	•	•
Writing table					•	•	•	•	•	•	•	•	•	•	•	•	•	•	•
<b>Maintenance features</b>																			
Easy access for maintenance					•	•	•	•	•	•	•	•	•	•	•	•	•	•	•
Fault diagnosis facility					•	•	•	•	•	•	•	•	•	•	•	•	•	•	•
<b>Battery management features</b>																			
Battery discharge prevention system					•	•	•	•	•	•	•	•	•	•	•	•	•	•	•
Lithium-Ion batteries					•	•	•	•	•	•	•	•	•	•	•	•	•	•	•
Battery status indicator					•	•	•	•	•	•	•	•	•	•	•	•	•	•	•
Built-in charger					•	•	•	•	•	•	•	•	•	•	•	•	•	•	•
Sideways battery change					•	•	•	•	•	•	•	•	•	•	•	•	•	•	•
<b>Special applications</b>																			
Coldstore version					•	•	•	•	•	•	•	•	•	•	•	•	•	•	•
EEx version (ATEX)					•	•	•	•	•	•	•	•	•	•	•	•	•	•	•

# BT Staxio W-series

PEDESTRIAN-OPERATED STACKER TRUCKS

The BT Staxio W-series is designed to let the operator get on with the job simply and safely. The trucks provide essential lifting power in warehouses and retail premises, where safety and manoeuvrability are particularly important. The heavy-duty range is built to handle heavy loads in high racking applications.

## Wide choice of models

The BT Staxio W-series includes a simple mono-mast version for lower and lighter load handling (SWE080L), versions with elevating support arms for extra low level capacity (120L/140L/145L/160L/200L), a version with adjustable fork width and straddle support arms (120S/ 140S), a version that is designed for double load handling (SWE200D) and a model with retractable mast (SWE120XR).

## 5-point chassis

BT Staxio W-series boasts BT's unique 5-point chassis for excellent stability and control, especially on ramps and uneven surfaces.

## Central steering arm

The steering arm is placed centrally, allowing even turning in both directions and a consistently small turning radius.

## Handling with care – just Click-2-Creep!

Finite positioning is easy with these BT Staxio W-series trucks. The unique Click-2-Creep feature means that by simply double-clicking the control lever the truck is set to creep speed, allowing safe control in tight situations.

## Totalview concept

Designed with Toyota's Totalview concept, SWE models offer clear-view masts and eye-lines from the operating position to the fork tips.

## TPS-based reliability

Like all Toyota trucks, BT Staxio trucks are built according to the Toyota Production System, assuring the highest levels of quality, durability and reliability.

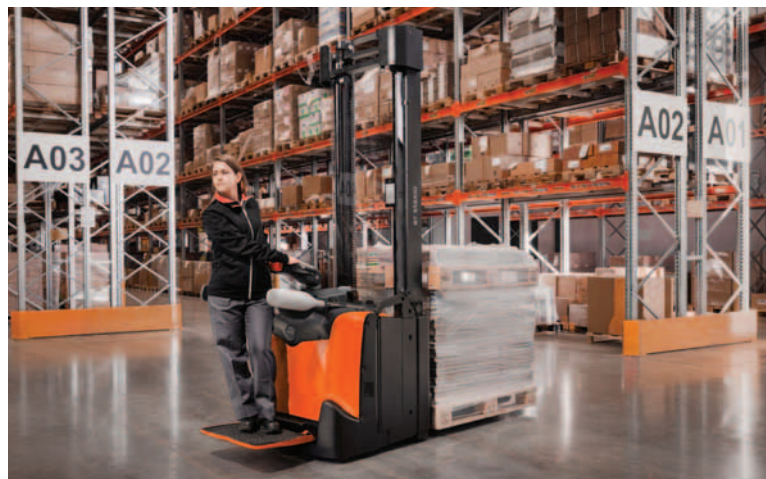
- The tiller arm length is optimised for safety, keeping the operator's feet away from the truck
- 5-point chassis
- BT Totalview
- Ergonomic control handle, with emergency 'belly button' which, to avoid trapping, briefly reverses the truck if depressed

Load capacity: 0.8, 1.0, 1.2, 1.4, 1.45, 1.6, 2.0 t  
@ 600 mm load centre  
Maximum lift height: 6.0 m  
Maximum battery capacity: 500 Ah

options available:

I\_Site LI-ION  







• standard • option

	Safety	Durability	Productivity	BT Staxio SPE 120	BT Staxio SPE 120L	BT Staxio SPE 140	BT Staxio SPE 140L	BT Staxio SPE 140S	BT Staxio SPE 160	BT Staxio SPE 160L	BT Staxio SPE 200	BT Staxio SPE 200L	BT Staxio SPE 200D	BT Staxio SPE 200DN	BT Staxio SPE 120XR	BT Staxio SPE 120XRD
<b>Truck features</b>																
Reach mast with pantograph fork mechanism															•	•
Adjustable fork width								•							•	•
Tilt function															•	•
Sideshift function															•	•
Fork spreader function															•	•
Automatic parking brake	•														•	•
Bogie fork wheels				•	•	•	•	•	•	•	•	•	•	•	•	•
Choice of chassis widths							•	•	•	•	•	•	•	•	•	•
Clear-view mast	•														•	•
Clear-view overhead guard	•			•	•	•	•	•	•	•	•	•	•	•	•	•
Double pallet handling						•	•								•	•
Electronic braking system	•	•		•	•	•	•	•	•	•	•	•	•	•	•	•
Electronic regenerative brakes (motor)	•	•		•	•	•	•	•	•	•	•	•	•	•	•	•
Electronic speed control	•	•		•	•	•	•	•	•	•	•	•	•	•	•	•
Elevating support arms						•			•						•	•
High-capacity battery models				•	•	•	•	•	•	•	•	•	•	•	•	•
Thin 35 mm forks															•	•
Load support	•			•	•	•	•	•	•	•	•	•	•	•	•	•
Powertrak traction system		•		•	•	•	•	•	•	•	•	•	•	•	•	•
High capacity stacking drive unit				•	•	•	•	•	•	•	•	•	•	•	•	•
Spring-loaded drive wheel	•			•	•	•	•	•	•	•	•	•	•	•	•	•
Straddle support arm version								•								
Shock sensor	•			•	•	•	•	•	•	•	•	•	•	•	•	•
Xenon exterior covers	•			•	•	•	•	•	•	•	•	•	•	•	•	•
<b>Controls and instruments</b>																
180°+ steering			•	•	•	•	•	•	•	•	•	•	•	•	•	•
Access Control (PIN codes)	•			•	•	•	•	•	•	•	•	•	•	•	•	•
Automatic deceleration	•			•	•	•	•	•	•	•	•	•	•	•	•	•
E-bar	•			•	•	•	•	•	•	•	•	•	•	•	•	•
Electronic fingertip controls	•			•	•	•	•	•	•	•	•	•	•	•	•	•
Emergency collision button	•			•	•	•	•	•	•	•	•	•	•	•	•	•
Emergency cut-off	•			•	•	•	•	•	•	•	•	•	•	•	•	•
Hour meter	•			•	•	•	•	•	•	•	•	•	•	•	•	•
On-board data terminal mount	•			•	•	•	•	•	•	•	•	•	•	•	•	•
Power/Electronic steering	•			•	•	•	•	•	•	•	•	•	•	•	•	•
Sensi-lift	•			•	•	•	•	•	•	•	•	•	•	•	•	•
Temporary speed reduction (turtle button)	•			•	•	•	•	•	•	•	•	•	•	•	•	•
Soft drive characteristic when stacking (OTP)	•			•	•	•	•	•	•	•	•	•	•	•	•	•
Reduced speed when cornering (OTP)	•			•	•	•	•	•	•	•	•	•	•	•	•	•
Driver direction dependent steering (OTP)	•			•	•	•	•	•	•	•	•	•	•	•	•	•
Tiller arm steering	•			•	•	•	•	•	•	•	•	•	•	•	•	•
Smart Access (electronic card/fob)	•			•	•	•	•	•	•	•	•	•	•	•	•	•
<b>Operator features</b>																
Adjustable tiller arm height	•			•	•	•	•	•	•	•	•	•	•	•	•	•
Configuration dependent tiller arm length	•			•	•	•	•	•	•	•	•	•	•	•	•	•
Driver detection system	•			•	•	•	•	•	•	•	•	•	•	•	•	•
Driver-adapted programmable performance	•			•	•	•	•	•	•	•	•	•	•	•	•	•
Fixed sideguards	•			•	•	•	•	•	•	•	•	•	•	•	•	•
Flip-down driver platform	•			•	•	•	•	•	•	•	•	•	•	•	•	•
Folding sideguards	•			•	•	•	•	•	•	•	•	•	•	•	•	•
Rear backrest/guard	•			•	•	•	•	•	•	•	•	•	•	•	•	•
Foot safety photocell	•			•	•	•	•	•	•	•	•	•	•	•	•	•
One touch safety guards	•			•	•	•	•	•	•	•	•	•	•	•	•	•
Shrinkwrap holder	•			•	•	•	•	•	•	•	•	•	•	•	•	•
Storage compartments	•			•	•	•	•	•	•	•	•	•	•	•	•	•
Writing table	•			•	•	•	•	•	•	•	•	•	•	•	•	•
<b>Maintenance features</b>																
Easy access for maintenance	•			•	•	•	•	•	•	•	•	•	•	•	•	•
Fault diagnosis facility	•			•	•	•	•	•	•	•	•	•	•	•	•	•
Historic fault log	•			•	•	•	•	•	•	•	•	•	•	•	•	•
<b>Battery management features</b>																
Battery status indicator	•			•	•	•	•	•	•	•	•	•	•	•	•	•
Lithium-ion batteries	•			•	•	•	•	•	•	•	•	•	•	•	•	•
Quick battery locking	•			•	•	•	•	•	•	•	•	•	•	•	•	•
Sideways battery change	•			•	•	•	•	•	•	•	•	•	•	•	•	•
<b>Special applications</b>																
Coldstore version	•			•	•	•	•	•	•	•	•	•	•	•	•	•
Corrosive environment version	•			•	•	•	•	•	•	•	•	•	•	•	•	•
EEx version (ATEX)	•			•	•	•	•	•	•	•	•	•	•	•	•	•

# BT Staxio P-series

STACKERS WITH DRIVER PLATFORM

BT Staxio P-series trucks are designed for intensive applications. They lift high, offer great stability and are fast. Combined with large battery capacities and high residual capacities, the P-series will lift your productivity.

## Wide choice of models

The BT Staxio P-series includes versions with fixed support arms (SPE 120/140/160/200), with elevating support arms for extra low level capacity (SPE 120L/140L/160L/200L), a version with adjustable fork width and straddle support arms (SPE 140S) and two versions designed for double load handling (SPE 200D/200DN). The SPE 120XR and SPE 120XRD further expand the versatility of the range with moving mast or pantograph based fork carriage. SPE 120XRD handles double loads.

## Not afraid of heights

BT Staxio achieves the highest lift heights in its class and handles heavy loads with confidence. Lifting speed can be precisely controlled using the intuitively designed rocker switch on the handle. This allows faster work cycles and effective placement and retrieval. Designed with Toyota's Totalview concept, SPE models offer clear-view masts resulting in an unobstructed view of the fork tips.

## Class leading residual capacities

BT's unique 5-point chassis offers excellent stability and control, especially on ramps and uneven surfaces.

All P-series models are built on BT's patented Powertrak chassis. This hydraulic system ensures that the down force applied to the drive wheel is proportional to the weight on the forks, for optimum traction. At high level, the advanced system locks the drive wheel resulting in exceptionally high residual capacities and the upmost stability.

## Unique driver experience

The standard truck has a folding driver platform with 'one-touch' foldable gates. Fixed platform and fixed rear or side guards are options. The height of the steering arm is fully adjustable at the touch of a button. Optimised Truck Performance adjusts speed when cornering based on direction of travel, and if pedestrian operated. Effortless electronic steering is standard.

## Li-ion option for intensive operations

This maintenance-free battery technology gives 30% less energy consumption, exceptional battery life and the option for fast-charge at any time eliminating the need for battery change in multi-shift applications.

## TPS-based reliability

Like all Toyota trucks, BT Staxio trucks are built according to the Toyota Production System, assuring the highest levels of quality, durability and reliability.

- Clear view on the forks when driving or lifting
- Net protection on the mast for safer load handling
- Side guards and E-man steering for comfortable and safe long distance driving
- E-bar allows easy mounting of ancillary equipment

Load capacity: 1.20, 1.40, 1.60, 2.0 t  
@ 600 mm load centre  
Maximum lift height: 6.0 m  
Maximum battery capacity: 500 Ah

options available:

I\_Site LI-ION  



SSE135



SSE160D





• standard • option

	Safety	Durability	Productivity	Driveability	BT Staxio SSE135	BT Staxio SSE135L	BT Staxio SSE160	BT Staxio SSE160L	BT Staxio SSE160D
<b>Truck features</b>									
Automatic parking brake					•	•	•	•	•
Bogie fork wheels					•	•	•	•	•
Clear-view mast					•	•	•	•	•
Clear-view overhead guard					•	•	•	•	•
Double pallet handling					•	•	•	•	•
Electronic braking system					•	•	•	•	•
Electronic regenerative brakes (motor)					•	•	•	•	•
Electronic speed control					•	•	•	•	•
Elevating support arms					•	•	•	•	•
Load support					•	•	•	•	•
<b>Controls and instruments</b>									
180°+ steering					•	•	•	•	•
360° progressive steering					•	•	•	•	•
Automatic deceleration					•	•	•	•	•
E-bar					•	•	•	•	•
Electronic fingertip controls					•	•	•	•	•
Emergency cut-off					•	•	•	•	•
Hour meter					•	•	•	•	•
On-board data terminal mount					•	•	•	•	•
Parking brake					•	•	•	•	•
Power/Electronic steering					•	•	•	•	•
Steering direction indicator					•	•	•	•	•
<b>Operator features</b>									
Adjustable backrest					•	•	•	•	•
Driver detection system					•	•	•	•	•
Driver-adapted programmable performance					•	•	•	•	•
Low step-in					•	•	•	•	•
Storage compartments					•	•	•	•	•
Writing table					•	•	•	•	•
<b>Maintenance features</b>									
Easy access for maintenance					•	•	•	•	•
Fault diagnosis facility					•	•	•	•	•
Historic fault log					•	•	•	•	•
<b>Battery management features</b>									
Battery change facility					•	•	•	•	•
Battery status indicator					•	•	•	•	•
Heavy-duty battery compartments					•	•	•	•	•
Sideways battery change					•	•	•	•	•
<b>Special applications</b>									
Coldstore version					•	•	•	•	•
Ex version (ATEX)					•	•	•	•	•

# BT Staxio S-series

STAND-IN STACKERS

The BT Staxio S-series has been developed for applications where it is preferred that the operator is 'off the floor' working in a fully enclosed cab, while maintaining a standing position for speed and flexibility.

## Double-pallet handling

BT Levio S-series 'L' models can carry two separate loads at the same time thanks to their elevating support arms (SSE135L: 675kg on support arms, 675kg on forks. SSE160L: 800kg on support arms, 800kg on forks).

## Double-pallet vehicle loading/unloading

Designed with a narrow chassis of just 770 mm and without overhead guard for work in vehicles, the SSE160D is ideal for double-pallet loading and unloading. Like the SSE160L, it can carry 800 kg simultaneously on both support arms and forks.

## Sideways driving position

The controls on BT Staxio S-series trucks are parallel to the forks, enabling the operator to drive comfortably in either direction, with clear and easy visibility.

## Totalview concept

Designed with Toyota's Totalview concept, SSE models offer clear-view masts and a patented overhead mast design.

## TPS-based reliability

Like all Toyota trucks, BT Staxio trucks are built according to the Toyota Production System, assuring the highest levels of quality, durability and reliability.

- The visibility window adds to the S-series' high safety standards
- The battery on S-series models is seated on rollers with a built in battery table, allowing easy sideways battery exchange

Load capacity: 1.35, 1.6 t  
@ 600 mm load centre  
Maximum lift height: 6.3 m  
Maximum battery capacity: 620 Ah

option available:

**I\_Site**





• standard • option

	Safety	Durability	Productivity	Driveability	BT Staxio SRE135	BT Staxio SRE135L	BT Staxio SRE160	BT Staxio SRE160L
<b>Truck features</b>								
Automatic parking brake	•			•	•	•	•	•
Bogie fork wheels			•		•	•	•	•
Clear-view mast	•		•		•	•	•	•
Clear-view overhead guard	•		•		•	•	•	•
Double pallet handling			•		•	•	•	•
Electronic speed control	•		•	•	•	•	•	•
Elevating support arms			•		•	•	•	•
Load support	•		•		•	•	•	•
Warning beacon	•		•		•	•	•	•
Working lights	•		•	•	•	•	•	•
<b>Controls and instruments</b>								
Adjustable BT Control console			•	•	•	•	•	•
Automatic deceleration	•		•		•	•	•	•
E-bar			•	•	•	•	•	•
Emergency cut-off	•		•		•	•	•	•
Hour meter			•		•	•	•	•
On-board data terminal mount			•	•	•	•	•	•
Parking brake	•		•		•	•	•	•
Pedals as in a car	•		•	•	•	•	•	•
Power/Electronic steering	•		•	•	•	•	•	•
<b>Operator features</b>								
Adjustable seat	•		•	•	•	•	•	•
Adjustable steering wheel	•		•	•	•	•	•	•
Driver detection system	•		•		•	•	•	•
Writing table			•	•	•	•	•	•
<b>Maintenance features</b>								
Easy access for maintenance	•	•	•		•	•	•	•
Fault diagnosis facility	•	•	•		•	•	•	•
<b>Battery management features</b>								
Battery change facility		•	•		•	•	•	•
Battery status indicator	•	•	•		•	•	•	•
Heavy-duty battery compartments		•	•		•	•	•	•
Sideways battery change		•	•	•	•	•	•	•
<b>Special applications</b>								
Coldstore version	•	•			•	•	•	•
EEx version (ATEX)	•				•	•	•	•

# BT Staxio R-series

## RIDER-SEATED STACKERS

The BT Staxio R-series is designed for intensive stacking applications with lift heights up to 6.3m. The seated cab ensures driver comfort and safety over long shifts.

### Sideways driving position

As in a reach truck, the controls on BT Staxio R-series trucks are parallel to the forks, enabling the operator to drive comfortably in either direction.

### Totalview concept

Designed with Toyota's Totalview concept, SRE models offer clear-view masts and a patented overhead mast design.

### TPS-based reliability

Like all Toyota trucks, BT Staxio trucks are built according to the Toyota Production System, assuring the highest levels of quality, durability and reliability.

- Car pedal layout
- The E-bar universal mount for warehouse management devices such as PC terminals and barcode scanners

Load capacity: 1.35, 1.6 t  
@ 600 mm load centre  
Maximum lift height: 6.3 m  
Maximum battery capacity: 620 Ah

options available:

I\_Site



## How we plan your operation:

---



### Advice

Your local sales contact is your trusted business advisor for all handling and logistics operations. We will analyse your requirements and find efficient solutions, as well as support your activities during the planning and operational phases.

### Complete range

We offer you a complete range of Toyota trucks: hand pallet trucks, warehouse trucks, counterbalance forklifts, tow tractors and automated solutions.

### Solutions

We offer you financial options, including finance lease and long term rental programmes. Our quality approved used trucks are available at a competitive cost level. You can also plan forward with short-term hire options to handle peak periods of activity.

## How we build quality trucks:

---



### TPS

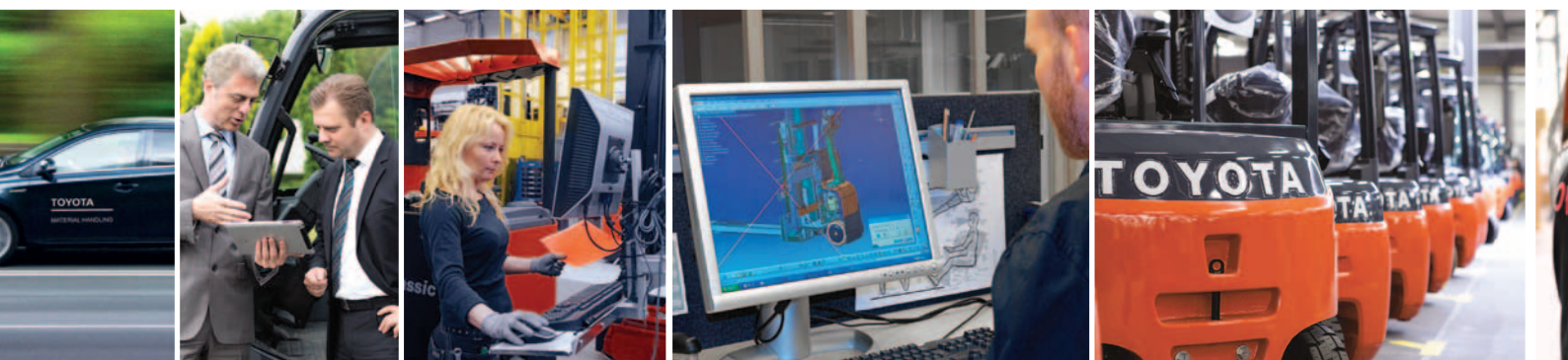
The world-renowned Toyota Production System is the strong foundation for quality in manufacturing and is used in all of our factories.

### Kaizen

The Toyota Production System is built around a process of continuous improvement, achieved by following a clear set of values.

### ISO 14001

All trucks are produced to these quality standards with minimum environmental impact.





# How we take care of you and your trucks:

---



## **TSC**

The Toyota Service Concept is based on the TPS principle and is unique in the industry.

## **Total lifetime support**

Service, maintenance, repairs, Thorough Examination, back-up with extra trucks, driver training and management information.

## **Real-time information**

Instant online access to updated information such as technical support, truck history, parts, truck availability and effective time and route planning

## **Exact-fit**

In terms of parts and people, with structured training and accreditation processes.

## **GPRS/3G**

Smart truck telemetry allows better safety standards (including driver management) and complete fleet control for improved safety, efficiency and cost reduction (with Toyota I\_Site).

# We think customer first

**Reliability**  
**Confidence**  
**Availability**  
**Productivity**  
**Quality**  
**Safety**  
**Cost-efficiency**  
**Sustainability**  
**Environment**

These are the expectations of our customers, with fleets of all different sizes.

We get to know them through surveys, sales discussions and service visits.

We are always there for them.



For more information about:

- Toyota Production System (TPS)
  - Toyota Service Concept (TSC)
  - Finance and rental plans
  - Service and parts support
  - Smart truck technology
  - Toyota I\_Site truck management
  - Environment & sustainability policies
- please ask your Toyota representative, or visit [www.toyota-forklifts.co.uk](http://www.toyota-forklifts.co.uk)

# Toyota

## The total business solution

*Pictures used are for illustration purposes only. Availability and specifications are determined regionally, and are subject to change without notice. Please consult your Toyota Material Handling representative for details.*



TP-Technical Publications, — 749712-040, 0117